



RV GENERATORS - QUIETPACT

QP-85D

Diesel RV Generator Set

Model 005432-0, 005851-0 - 8.5 kW 60Hz

APPLICATIONS:

- Class A Motorhomes with single or dual roof A/C
- Sport Utility Trailers
- Horse Trailers
- Industrial Vehicles



FEATURES

- **INNOVATIVE DESIGN & PROTOTYPE TESTING** are key components of GENERAC'S success in "IMPROVING POWER BY DESIGN." But it doesn't stop there. Total commitment to component testing, reliability testing, environmental testing, destruction and life testing, plus testing to applicable CSA, RVIA, and other standards, allows you to choose GENERAC POWER SYSTEMS with the confidence that these systems will provide superior performance.
- **LOW RPM SPEED CONTROL:** Speed control allows the robust 1131cc engine to operate at a constant speed of 1950 RPM, eliminating annoying speed changes.
- **SINGLE SOURCE SERVICE RESPONSE** from Generac's dealer network provides parts and service know-how for the entire unit, from the engine to the smallest electronic component. You are never on your own when you own a GENERAC POWER SYSTEM.
- **SOLID-STATE, FREQUENCY COMPENSATED VOLTAGE REGULATION.** This state-of-the-art power maximizing regulation system is standard on all Generac models. It provides optimized FAST RESPONSE to changing load conditions and MAXIMUM MOTOR STARTING CAPABILITY by electronically torque-matching the surge loads to the engine.
- **SUPERIOR FUEL ECONOMY:** While under typical loads, the constant RPM allows for a much more fuel efficient system when compared to variable speed alternatives.
- **INDUSTRY STANDARD FOOTPRINT AND BOLT PATTERN:** Standardized air inlet and exhaust outlets, bolt patterns and wire locations allow for easy installation in any application with little or no need to modify existing enclosure accommodations.

GENERAC[®]

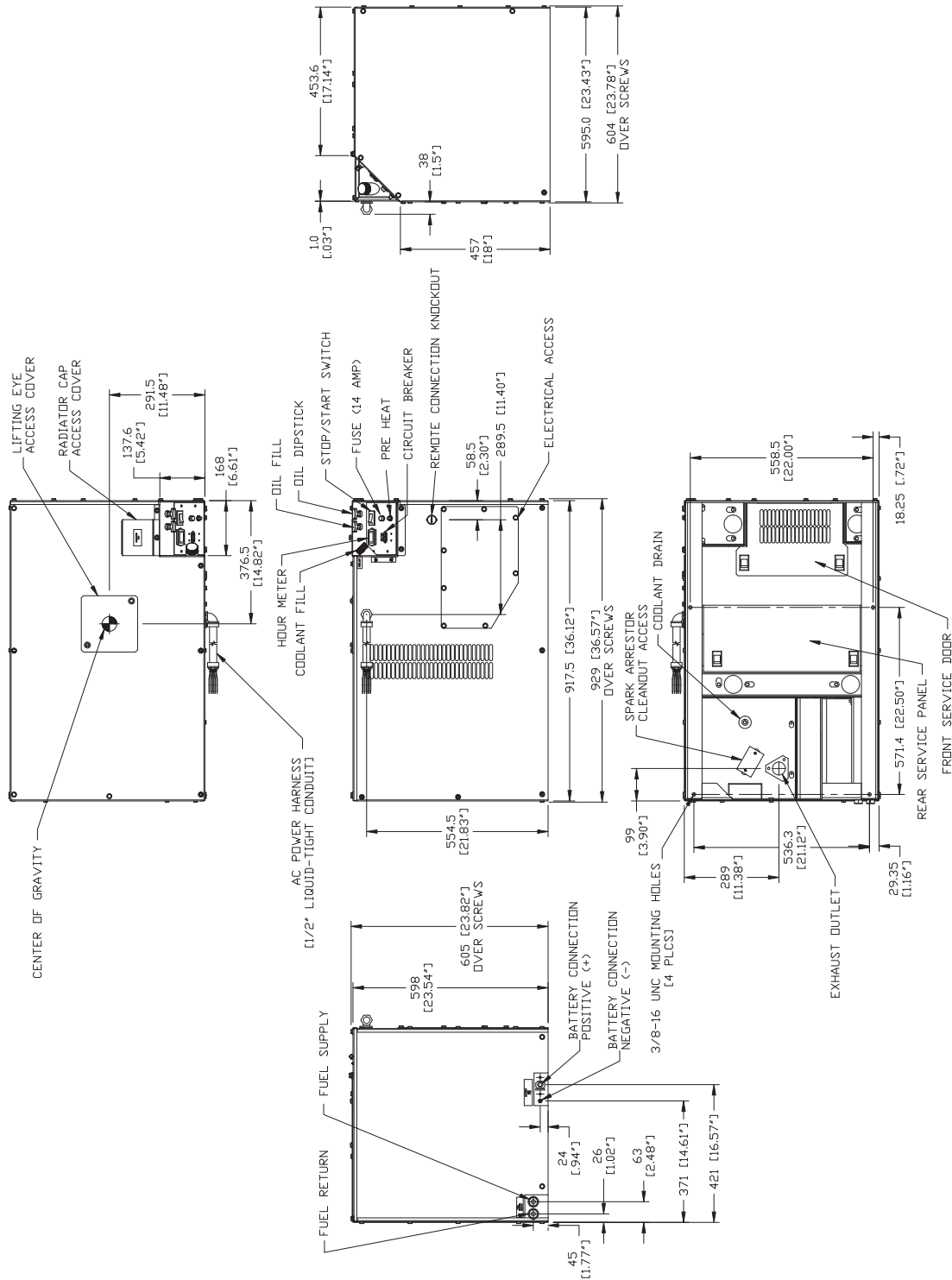
<p style="writing-mode: vertical-rl; transform: rotate(180deg);">ENGINE</p>	<ul style="list-style-type: none"> •Generac ISM diesel •Cast iron block and cylinder walls •Low operating RPM •Full pressure lubrication system •Low oil pressure shutdown system •High temperature shutdown •Certifications 	<p>Three cylinder, in-line, heavy duty diesel engine for maximum power output and smooth operation.</p> <p>Rigid construction and added durability provide long engine life.</p> <p>Constant 1950 RPM level maintains consistent, low speed operation without annoying speed changes.</p> <p>Superior lubrication to all vital bearings means better performance, less maintenance and significantly longer engine life. Full flow oil filter with bypass valve.</p> <p>Superior shutdown protection prevents catastrophic engine damage due to low oil.</p> <p>Prevents damage due to overheating.</p> <p>RVIA, CARB, EPA, U.S. Forest Service</p>
<p style="writing-mode: vertical-rl; transform: rotate(180deg);">GENERATOR</p>	<ul style="list-style-type: none"> •Displaced phase excitation •Automatic voltage regulation •Belt driven •RVIA Listed 	<p>Maximizes motor starting capability.</p> <p>Regulates the output voltage to $\pm 2\%$ prevents damaging voltage spikes.</p> <p>Lowers the engine speed to reduce fuel consumption and noise levels, and to increase engine life.</p> <p>For your safety</p>
<p style="writing-mode: vertical-rl; transform: rotate(180deg);">CONTROLS</p>	<ul style="list-style-type: none"> •Standard hour meter •Remote Start/Stop option •Battery charger •Main Line Circuit Breaker •Mechanical governor 	<p>Allows customers to monitor generator runtime.</p> <p>Allows for starting from any selected location inside the vehicle.</p> <p>2 Amp "trickle charger" maintains battery when generator is in use.</p> <p>Protects generator from overload.</p> <p>Reacts quickly to changing loads.</p>
<p style="writing-mode: vertical-rl; transform: rotate(180deg);">UNIT</p>	<ul style="list-style-type: none"> •Durable, Rhino-coated enclosure •Enclosed critical grade muffler •Spark arrested exhaust •Enhanced serviceability 	<p>Provides the ultimate protection against mother nature.</p> <p>Quiet, critical grade muffler is mounted inside the unit to prevent injuries while stationary or in transit.</p> <p>Includes a spark arrestor approved by the U.S. Forest Services.</p> <p>Simple one side serviceability for performing maintenance.</p>

SPECIFICATIONS

GENERAC®

GENERATOR		Model 05432/5851
Rated Maximum Continuous Power Capacity (Gasoline)		8500 Watts
Rated Voltage		120
Rated Maximum Continuous Load Current 120 Volts		70.8 Amps
240 Volt Configurable		Yes (35.4 Amps)
Main Line Circuit Breakers		40 & 40 Amp
Phase		1
Number of Rotor Poles		2
Rated AC Frequency		60Hz
Power Factor		1
Engine RPM		1950
Rotor RPM		3600
Unit Weight (Pounds/Kilos)		504/228.6
Dimensions (L x W x H) inches mm		36.6 x 23.8 x 23.8 930 x 605 x 605
ENGINE		Model 05432/5851
Type of Engine		GENERAC ISM DIESEL
Number of Cylinders		3
Displacement		1131cc
Cylinder Block		Cast Iron
Ignition System		Compression w/precombustion chamber
Governor System		Mechanical Fixed Speed
Compression Ratio		23.56:1
Starter		12 Vdc
Oil Capacity (Quarts/Liters)		Approx. 4.6 Qts./4.35L
Fuel Consumption		
Gallons/Liters per hour		
10% Load		0.28/1.06
50% Load		0.49/1.85
100% Load		0.78/2.95

Generac RV Generator - QP-85D



Service After the Sale

Generac's certified service organization, the largest in the industry, provides unsurpassed installation, reliable ongoing maintenance, and large inventories of parts, components, and accessories.

For RV product support please call 888-GENERAC or visit our dealer locator at www.guardiangenerators.com.

Owner's manuals (including installation, operation, maintenance and support information) are shipped with every Generac RV generator. Additional copies can be downloaded from www.generac.com.



Generac Power Systems, Inc. • S45 W29290 HWY. 59, Waukesha, WI 53189 • generac.com

©2010 Generac Power Systems, Inc. All rights reserved. All specifications are subject to change without notice. Bulletin 0181850SBY rev B/Printed in U.S.A. 01/05/10